

i-bowl Smart pet bowl

| i n s t r u c t i o n |

What is i-bowl?

i-bowl is a smart device which is specially designed for pets. It implements these functions by accurately scaling: more balanced feeding amount recommendation, irregular diet notification and 24h auto recording of eating data and details, which can help your pet develop a healthier and more balanced diet. i-bowl adopts animal-friendly design and is made of anti-bacteria material. It is easily washable and can be immersed in water.

Product Functions



Accurately Scale
unit conversion(g/lbs)
maximum weight 2000g



Irregular Diet Notification
pet eats too much or too little
APP will receive a notification



Suggested Feeding Quantity
recommend the healthier and more
balanced feeding amount according
to your pet individual condition



Detailed Analysis of The Diet
time & quantity

Parameter

Power supply: AA battery×3

Power: could remain for around 5 months
(Power on for 24hours and the screen displays numbers for 30mins a day)

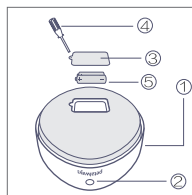
ABS material: antibacterial and high-temperature resistance,120 C

Waterproof: easily washable and can be immersed

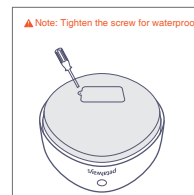
Communication: Bluetooth 4.0

Scale range: 0g - 2000g

Installation Instructions



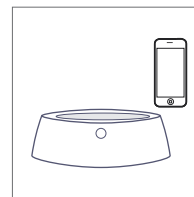
open the back cover
& insert battery



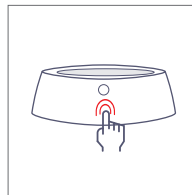
close the back cover



scanning the QR cord and
download APP



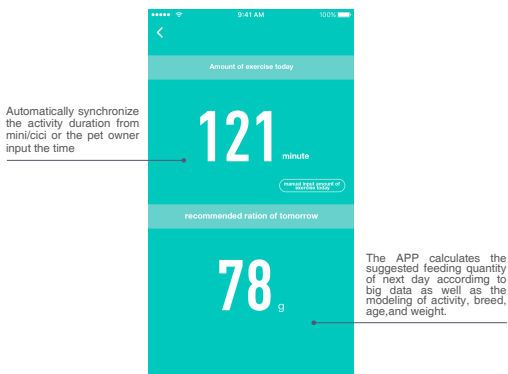
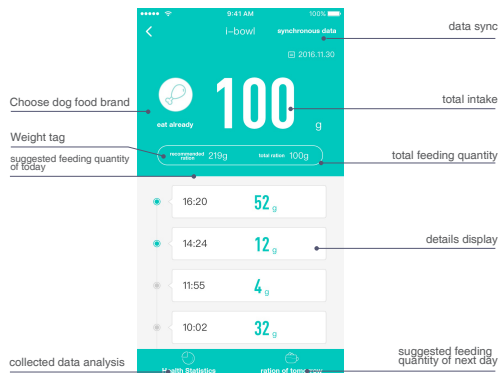
link i-bowl to the APP



power on
(Press the button for 3s)

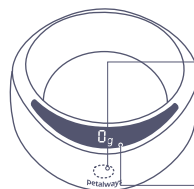
- ① i-bowl ④ screwdriver
- ② button ⑤ battery
- ③ backcover

Brief Introduction of The Functions in APP



▲ Note: if you did not click the "suggested QTY" yesterday or input the activity duration, then there is no number of suggested feeding quantity. Meanwhile, there is no irregular diet notification when your pet eats too much or too little.

Brief Introduction of The Functions in APP



Power on: press the button for 3s
(zero out at boot time)

Power off: press the button for 3s

Unit conversion: click the button when the screen is lighted (g/lbs)

Standby: screen will be locked without operations for 10s

Wake up screen: click the button when the screen is locked

Scale: put dog food into i- bowl, then the screen will show a final number after few seconds

▲ Note: In order to get the accurate data, the bowl must be power off when removing the residual food or being washed. Make sure the bowl is empty before the bowl is power on. As long as the bowl is power on, there is no impact on data record when the screen is locked.

Brief Introduction of The Functions in APP



1x i-bowl



1x user manual



1x screwdriver

WARRANTY CARD

USER INFORMATION

Name _____

Phone _____

Email _____

Address _____

Pose Code _____

PRODUCTION INFORMATION

Model _____

Date of purchase _____

www.petalways.com
Service e-mail: info@zaixuantech.com